



**Special Board of Directors Meeting  
Public Hearing #3  
3615 E Las Posas Road, Sequoia Rooms  
Camarillo, CA 93010  
Tuesday, September 3, 2019  
12:00 p.m.**

## **2019 Board Meeting Calendar**

January 22, 2019, 12:00 p.m.

February 26, 2019, 12:00 p.m.

March 26, 2019, 12:00 p.m.

April 23, 2019, 12:00 p.m.

May 28, 2019, 12:00 p.m.

June 11, 2019, 12:00 p.m. (Budget)

June 25, 2019, 12:00 p.m. (If Needed)

July 23, 2019, 12:00 p.m.

August – Dark

September 24, 2019, 12:00 p.m.

October 21, 2019, 12:00 p.m. (Amended)

November - Dark

December 10, 2019, 8:30 a.m. (Board Work Study)



## AGENDA

### Special Meeting - Public Hearing #3

September 3, 2019, 12:00 p.m.

Camarillo Health Care District Board of Directors  
3615 E Las Posas Road, Sequoia 1 and Sequoia 2  
Camarillo, California 93010

#### **Board Members:**

Christopher Loh, MD, President  
Rod Brown, MBA, Vice President  
Richard Loft, MD, Clerk of the Board  
Mark Hiepler, ESQ, Director  
Tom Doria, MD, Director

#### **Staff:**

Kara Ralston, Chief Executive Officer  
Sue Tatangelo, Chief Resource Officer  
Sonia Amezcua, Chief Administrative Officer  
Karen Valentine, Clerk to the Board

#### **Consultants**

Aleks R. Giragosian, ESQ, *Colantuono, Highsmith & Whatley, PC*  
Douglas Johnson, President, *National Demographics Corporation*

1. **CALL TO ORDER**

2. **ROLL CALL**

3. **PLEDGE OF ALLEGIANCE TO THE FLAG – Director Hiepler**

4. **PUBLIC COMMENT – CA GC Section 54954.3**

The Board reserves this time to hear from the public. Please complete a Speaker Card and submit to the Clerk to the Board. Speakers will be called in order of the specified agenda item, or in order of received general topic Speaker Cards. Comments regarding items not on the agenda are received; items on the agenda may be discussed. Three minutes per speaker are available; multiple speakers on the same topic/agenda item will be limited to 20 minutes total.

5. **CONSENT AGENDA**

Consent Agenda items are considered routine and are acted upon without discussion, with one motion. If discussion is requested, that item(s) will be removed from the Consent Agenda for discussion, and voted on as a separate item. If no discussion is requested, the Board President may request a motion to approve as presented.

**A.** It is the recommendation of staff that the Board of Directors approve the minutes of the Special Board Meeting/Public Hearing #2 of August 20, 2019 **(Please see Section 5-A)**

**B.** It is the recommendation of staff that the Board of Directors approve the Minutes of the Executive Committee Meeting of August 27, 2019. **(Please see Section 5-B)**

Suggested Motion: Motion to approve the Consent Calendar as presented.

Motion \_\_\_\_\_ Second \_\_\_\_\_ Abstain \_\_\_\_\_ Pass \_\_\_\_\_

Loh \_\_\_\_\_ Brown \_\_\_\_\_ Loft \_\_\_\_\_ Hiepler \_\_\_\_\_ Doria \_\_\_\_\_

**6. PUBLIC HEARING #3**

Public Hearing #3 Regarding the Proposed Maps for the Camarillo Health Care District's (District) Voting Zones Pursuant to California Elections Code Section 10010(a)(2) and Election Sequencing Pursuant to Elections Code Section 10010(b).

This public hearing will receive public comment regarding zoning maps, discuss draft zoning maps and election sequencing, and provide staff direction if additional analysis, revision, or comments are necessary.

**7. PUBLIC HEARING #4 – Public Hearing #4 will be held on September 24, 2019, at 12:00 p.m.**

**8. ADJOURNMENT**

**ACTION ITEMS** not appearing on the Agenda may be addressed on an emergency basis by a majority vote of the Board of Directors when need for action arises.

**ADA compliance statement;** In compliance with the Americans with Disabilities Act, if you need special assistance to participate in this meeting, please contact the Clerk to the Board of Directors, Karen Valentine, at (805) 482-9382. Notification 48 hours prior to the meeting will enable the District to make reasonable arrangements to ensure accessibility to this meeting.

Note: This agenda was posted at the Camarillo Health Care District Administrative Office and on our website, [www.camhealth.com](http://www.camhealth.com), on Friday, August 16, 2019, on or before 4:00 p.m.



**SECTION 5**

**CONSENT AGENDA**

**SECTION 5-A  
APPROVAL OF MINUTES OF  
THE SPECIAL MEETING/PUBLIC HEARING #2  
AUGUST 20, 2019.**

**SEPTEMBER 3, 2019**



## MINUTES

August 20, 2019

### Regular Meeting of the Board of Directors

3615 E. Las Posas Road, Sequoia A and B, Camarillo, CA 93010

#### **Board of Directors - Present**

Christopher Loh, MD, President  
Rodger Brown, MBA, Vice President  
Richard Loft, MD, Clerk of the Board  
Tom Doria, MD, Director

#### **Staff - Present**

Kara Ralston, Chief Executive Officer  
Sue Tatangelo, Chief Resource Officer  
Sonia Amezcua, Chief Administrative Officer  
Karen Valentine, Clerk to the Board

1. **Call to Order and Roll Call** - The Special Meeting of the Camarillo Health Care District Board of Directors was called to order on Tuesday, August 20, 2019, at 12:02 p.m., by Christopher Loh, President.

2. **Roll Call**

3. **Pledge of Allegiance** – Director Loft

4. **Public Comment** – None

5. **Consent Agenda**

It was **MOVED** by Director Loft, **SECONDED** by Director Brown, and **MOTION PASSED** that the Board of Directors approve the Consent Agenda as presented.

**Vote: Aye- Loh, Brown, Loft, Doria      Nays – None      Absent – Hiepler**

6. **District Zone Elections, Public Hearing #2**

Public member Dave Rodriguez offered comments regarding 1) the areas of Las Posas Road, Arneil Road, Lewis Avenue and Highway 101; and 2) North Los Angeles Avenue and parts of Somis.

7. Meeting adjourned at 12:30 p.m.

---

Richard Loft  
Clerk of the Board



**SECTION 5**

**CONSENT AGENDA**

**SECTION 5-B  
APPROVAL OF MINUTES OF  
THE EXECUTIVE COMMITTEE MEETING OF AUGUST 27, 2019.**

**SEPTEMBER 3, 2019**



## MINUTES

August 27, 2019

**Executive/Agenda Building Committee Meeting  
Public Hearing #3**

Camarillo Health Care District Board of Directors  
3615 E Las Posas Road, Oak Room, Camarillo, CA 93010

**Board Members Present:**

Christopher Loh, MD, President  
Rod Brown, MBA, Vice President

**Staff Present:**

Kara Ralston, Chief Executive Officer  
Karen Valentine, Clerk to the Board

- 
1. **Call to Order** – The Executive Committee Meeting was called to order by President, Christopher Loh, at 12:00 p.m.
  2. **Public Comment** – No Public Comment
  3. Reviewed the proposed Agenda for the September 3, 2019 Special Board of Directors Meeting.
  4. **Consent Agenda** – Reviewed the Minutes of the Special Board Meeting of August 20, 2019.
  5. **District Zone Elections, Public Hearing #3** – Reviewed the draft maps provided by NDC, and one draft map provided by MALDEF.
  6. Meeting adjourned at 12:55 p.m.

---

Christopher Loh  
President





**SECTION 6**

**PUBLIC HEARING #3  
ZONE BASED ELECTIONS  
COMMUNITIES OF INTEREST AND  
COMPOSITION OF VOTING ZONES**

**SECTION 6**

**PURSUANT TO CALIFORNIA ELECTIONS CODE SECTION 10010(A)(1), THE  
CAMARILLO HEALTH CARE DISTRICT MUST HOLD PUBLIC HEARINGS  
AT WHICH THE PUBLIC IS INVITED TO PROVIDE INPUT REGARDING  
THE COMPOSITION OF THE VOTING ZONES.**

**SEPTEMBER 3, 2019**



## **SECTION 6**

### **PUBLIC HEARING #3 ZONE BASED ELECTIONS COMMUNITIES OF INTEREST AND COMPOSITION OF VOTING ZONES**

#### **SECTION 6 – PURPLE MAP**

**PURSUANT TO CALIFORNIA ELECTIONS CODE SECTION 10010(A)(1), THE  
CAMARILLO HEALTH CARE DISTRICT MUST HOLD PUBLIC HEARINGS  
AT WHICH THE PUBLIC IS INVITED TO PROVIDE INPUT REGARDING  
THE COMPOSITION OF THE VOTING ZONES.**

**SEPTEMBER 3, 2019**

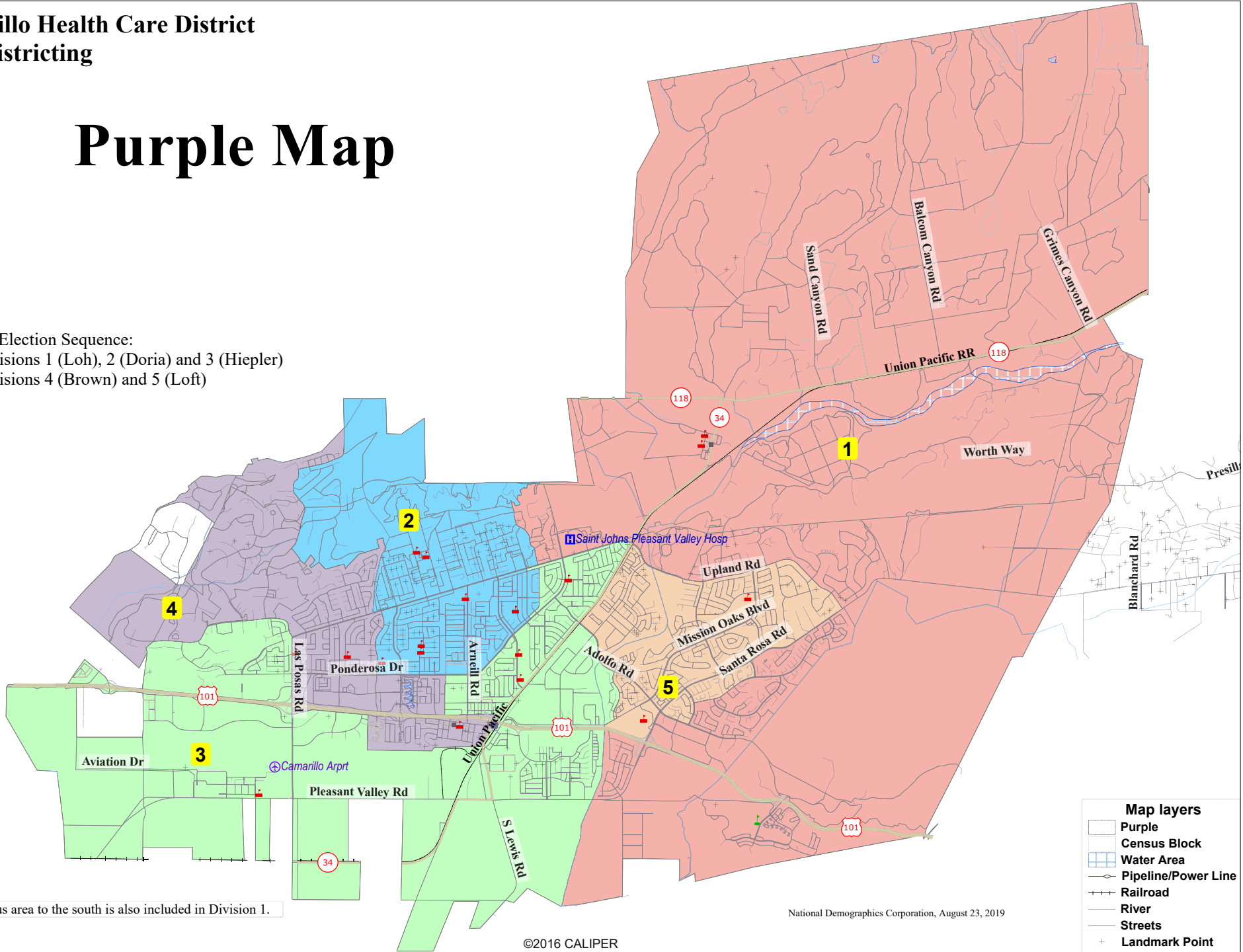
**Camarillo Health Care District  
2019 Districting**

# Purple Map

Proposed Election Sequence:

2020: Divisions 1 (Loh), 2 (Doria) and 3 (Hiepler)

2022: Divisions 4 (Brown) and 5 (Loft)



Non-contiguous area to the south is also included in Division 1.

National Demographics Corporation, August 23, 2019

©2016 CALIPER

Map layers	
	Purple
	Census Block
	Water Area
	Pipeline/Power Line
	Railroad
	River
	Streets
	Landmark Point

## Camarillo Health Care District - Purple Map

District		1	2	3	4	5	Total
	Total Pop	15,187	14,992	14,976	15,075	15,371	75,601
	Deviation from ideal	67	-128	-144	-45	251	395
	% Deviation	0.44%	-0.85%	-0.95%	-0.30%	1.66%	2.61%
Total Pop	% Hisp	20%	21%	34%	24%	17%	23%
	% NH White	70%	69%	51%	60%	64%	63%
	% NH Black	2%	2%	2%	3%	2%	2%
	% Asian-American	8%	7%	11%	11%	16%	11%
	Total	12,093	11,101	9,040	9,632	11,281	53,147
Citizen Voting Age Pop	% Hisp	18%	18%	31%	19%	17%	20%
	% NH White	70%	72%	56%	65%	72%	67%
	% NH Black	3%	1%	1%	3%	1%	2%
	% Asian/Pac.Isl.	8%	8%	12%	12%	9%	10%
	Total	9,547	10,223	8,211	7,624	9,118	44,723
Voter Registration (Nov 2018)	% Latino est.	14%	18%	27%	20%	16%	19%
	% Spanish-Surnamed	12%	16%	24%	18%	15%	17%
	% Asian-Surnamed	4%	3%	4%	4%	5%	4%
	% Filipino-Surnamed	1%	1%	2%	1%	2%	2%
	% NH White est.	79%	76%	65%	73%	76%	74%
	% NH Black	2%	1%	1%	2%	1%	2%
	Total	7,339	7,635	5,482	5,453	6,738	32,647
Voter Turnout (Nov 2018)	% Latino est.	12%	16%	23%	18%	14%	16%
	% Spanish-Surnamed	10%	14%	20%	16%	13%	14%
	% Asian-Surnamed	3%	3%	4%	4%	5%	4%
	% Filipino-Surnamed	1%	1%	2%	1%	2%	1%
	% NH White est.	82%	78%	69%	75%	79%	77%
	% NH Black	2%	2%	1%	2%	1%	2%
	Total	8,737	8,651	8,008	6,580	7,693	39,670
Voter Turnout (Nov 2016)	% Latino est.	12%	16%	25%	18%	15%	17%
	% Spanish-Surnamed	11%	14%	22%	16%	13%	15%
	% Asian-Surnamed	4%	3%	4%	4%	5%	4%
	% Filipino-Surnamed	1%	1%	2%	1%	2%	1%
	% NH White est.	79%	78%	60%	71%	78%	73%
	% NH Black est.	2%	1%	3%	3%	1%	2%
	Total	14,678	15,300	12,662	14,649	15,381	72,669
ACS Pop. Est.	Total	14,678	15,300	12,662	14,649	15,381	72,669
Age	age0-19	22%	25%	23%	24%	26%	24%
	age20-60	46%	48%	54%	52%	52%	50%
	age60plus	32%	27%	24%	24%	21%	25%
Immigration	immigrants	14%	11%	21%	18%	12%	15%
	naturalized	64%	68%	54%	50%	66%	59%
Language spoken at home	english	76%	80%	68%	76%	82%	77%
	spanish	16%	14%	23%	14%	7%	14%
	asian-lang	5%	4%	6%	7%	6%	6%
	other lang	3%	2%	3%	3%	5%	3%
Language Fluency	Speaks Eng. "Less than Very Well"	7%	6%	12%	8%	4%	7%
Education (among those age 25+)	hs-grad	51%	53%	53%	49%	47%	51%
	bachelor	24%	25%	22%	25%	30%	25%
	graduatedegree	18%	16%	12%	16%	19%	16%
Child in Household	child-under18	19%	30%	27%	25%	31%	26%
Pct of Pop. Age 16+	employed	51%	59%	62%	62%	64%	59%
Household Income	income 0-25k	15%	8%	13%	11%	12%	12%
	income 25-50k	17%	13%	18%	14%	11%	15%
	income 50-75k	14%	15%	15%	19%	10%	15%
	income 75-200k	40%	52%	39%	40%	51%	44%
	income 200k-plus	14%	12%	14%	15%	16%	14%
Housing Stats	single family	85%	93%	81%	66%	90%	83%
	multi-family	15%	7%	19%	34%	10%	17%
	rented	32%	26%	36%	48%	24%	33%
	owned	68%	74%	64%	52%	76%	67%

Total population data from the 2010 Decennial Census.

Surname-based Voter Registration and Turnout data from the California Statewide Database.

Latino voter registration and turnout data are Spanish-surname counts adjusted using Census Population Department undercount estimates. NH White and NH Black registration and turnout counts estimated by NDC. Citizen Voting Age Pop., Age, Immigration, and other demographics from the 2013-2017 American Community Survey and Special Tabulation 5-year data.



## **SECTION 6**

### **PUBLIC HEARING #3 ZONE BASED ELECTIONS COMMUNITIES OF INTEREST AND COMPOSITION OF VOTING ZONES**

#### **SECTION 6 – GREEN MAP**

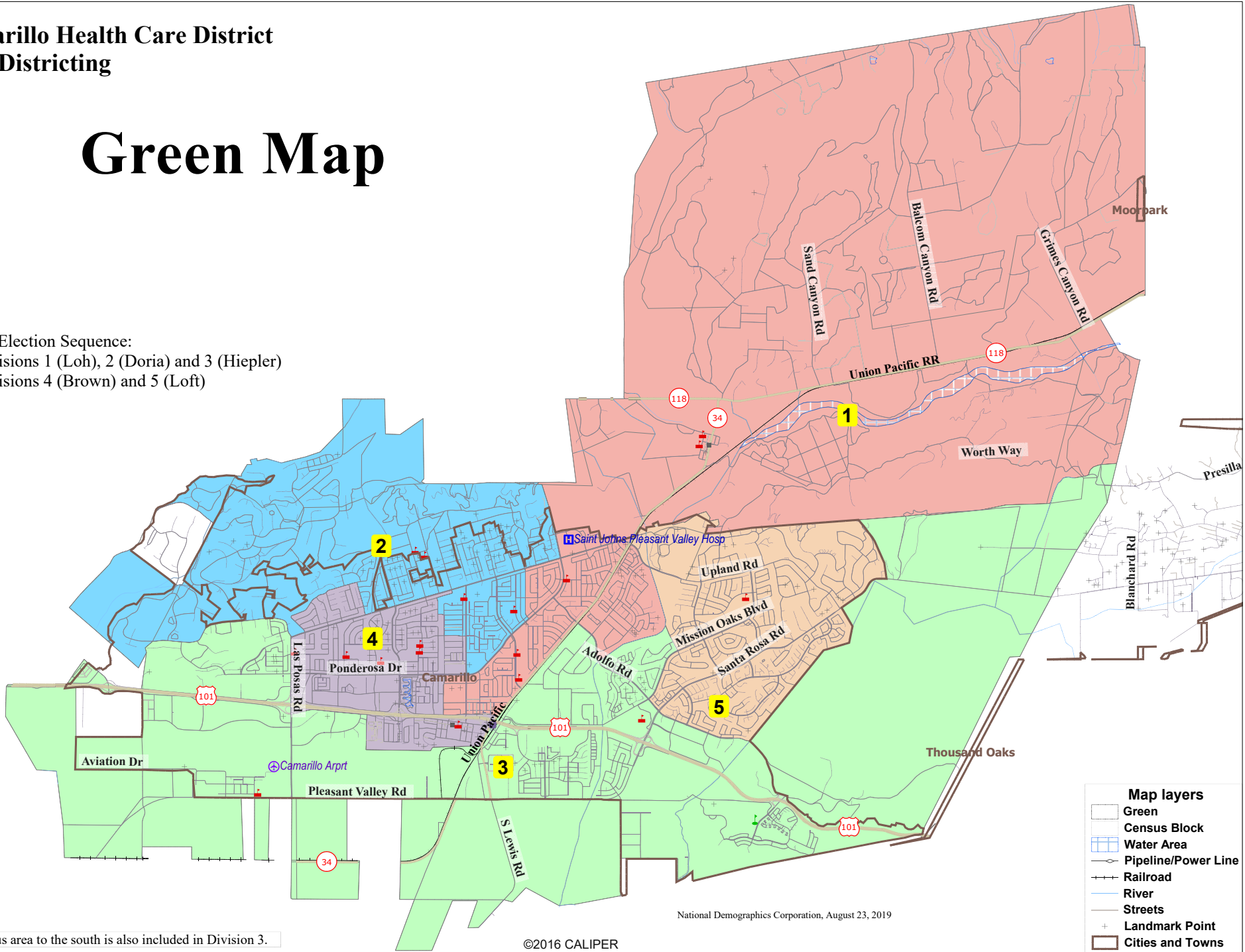
**PURSUANT TO CALIFORNIA ELECTIONS CODE SECTION 10010(A)(1), THE  
CAMARILLO HEALTH CARE DISTRICT MUST HOLD PUBLIC HEARINGS  
AT WHICH THE PUBLIC IS INVITED TO PROVIDE INPUT REGARDING  
THE COMPOSITION OF THE VOTING ZONES.**

**SEPTEMBER 3, 2019**

**Camarillo Health Care District  
2019 Districting**

# Green Map

Proposed Election Sequence:  
 2020: Divisions 1 (Loh), 2 (Doria) and 3 (Hiepler)  
 2022: Divisions 4 (Brown) and 5 (Loft)



Non-contiguous area to the south is also included in Division 3.

©2016 CALIPER

National Demographics Corporation, August 23, 2019

Map layers	
[Green fill]	Green
[Black outline]	Census Block
[Blue hatched]	Water Area
[Dashed line]	Pipeline/Power Line
[Black line with cross-ticks]	Railroad
[Blue line]	River
[Grey line]	Streets
[Red dot]	Landmark Point
[Black outline]	Cities and Towns

## Camarillo Health Care District - Green Map

District		1	2	3	4	5	Total
	Total Pop	15,247	14,981	14,545	15,567	15,261	75,601
	Deviation from ideal	127	-139	-575	447	141	1,022
	% Deviation	0.84%	-0.92%	-3.80%	2.96%	0.93%	6.76%
Total Pop	% Hisp	34%	17%	23%	27%	14%	23%
	% NH White	53%	72%	60%	57%	71%	63%
	% NH Black	2%	2%	2%	3%	1%	2%
	% Asian-American	10%	7%	13%	11%	12%	11%
	Total	8,879	11,132	11,337	9,867	11,931	53,147
Citizen Voting Age Pop	% Hisp	31%	15%	22%	22%	14%	20%
	% NH White	60%	72%	63%	64%	75%	67%
	% NH Black	1%	2%	3%	2%	1%	2%
	% Asian/Pac.Isl.	8%	10%	11%	9%	9%	10%
	Total	7,122	10,669	8,673	7,597	10,662	44,723
Voter Registration (Nov 2018)	% Latino est.	26%	15%	20%	24%	12%	19%
	% Spanish-Surnamed	24%	14%	18%	22%	11%	17%
	% Asian-Surnamed	4%	4%	5%	3%	5%	4%
	% Filipino-Surnamed	2%	1%	2%	2%	1%	2%
	% NH White est.	66%	78%	71%	69%	81%	74%
	% NH Black	1%	2%	2%	2%	1%	2%
	Total	4,933	8,170	6,115	5,248	8,180	32,647
Voter Turnout (Nov 2018)	% Latino est.	22%	13%	18%	22%	10%	16%
	% Spanish-Surnamed	19%	12%	16%	19%	9%	14%
	% Asian-Surnamed	3%	3%	4%	3%	4%	4%
	% Filipino-Surnamed	1%	1%	2%	1%	1%	1%
	% NH White est.	72%	80%	74%	72%	84%	77%
	% NH Black	1%	2%	2%	2%	1%	2%
	Total	6,707	9,162	7,767	6,416	9,618	39,670
Voter Turnout (Nov 2016)	% Latino est.	24%	13%	19%	21%	12%	17%
	% Spanish-Surnamed	21%	12%	17%	19%	10%	15%
	% Asian-Surnamed	3%	4%	4%	3%	4%	4%
	% Filipino-Surnamed	2%	1%	2%	1%	1%	1%
	% NH White est.	68%	81%	65%	68%	82%	73%
	% NH Black est.	2%	1%	4%	3%	1%	2%
	Total	13,531	15,232	14,071	15,180	14,655	72,669
ACS Pop. Est.	Total	13,531	15,232	14,071	15,180	14,655	72,669
Age	age0-19	26%	23%	26%	26%	20%	24%
	age20-60	54%	47%	53%	52%	45%	50%
	age60plus	20%	29%	21%	21%	35%	25%
Immigration	immigrants	19%	13%	16%	16%	12%	15%
	naturalized	49%	68%	62%	48%	76%	59%
Language spoken at home	english	67%	79%	76%	76%	85%	77%
	spanish	25%	13%	13%	15%	6%	14%
	asian-lang	5%	5%	7%	6%	6%	6%
	other lang	3%	2%	4%	3%	3%	3%
Language Fluency	Speaks Eng. "Less than Very Well"	12%	7%	6%	7%	4%	7%
Education (among those age 25+)	hs-grad	52%	50%	48%	52%	51%	51%
	bachelor	21%	26%	27%	23%	28%	25%
	graduatedegree	14%	17%	17%	15%	18%	16%
Child in Household	child-under18	31%	27%	27%	28%	20%	26%
Pct of Pop. Age 16+	employed	63%	59%	60%	62%	54%	59%
Household Income	income 0-25k	14%	7%	13%	12%	14%	12%
	income 25-50k	16%	12%	14%	15%	16%	15%
	income 50-75k	13%	14%	14%	20%	12%	15%
	income 75-200k	44%	48%	42%	44%	44%	44%
	income 200k-plus	13%	19%	17%	9%	14%	14%
Housing Stats	single family	85%	93%	81%	66%	91%	83%
	multi-family	15%	7%	19%	34%	9%	17%
	rented	35%	25%	35%	49%	22%	33%
	owned	65%	75%	65%	51%	78%	67%

Total population data from the 2010 Decennial Census.

Surname-based Voter Registration and Turnout data from the California Statewide Database.

Latino voter registration and turnout data are Spanish-surname counts adjusted using Census Population Department undercount estimates. NH White and NH Black registration and turnout counts estimated by NDC. Citizen Voting Age Pop., Age, Immigration, and other demographics from the 2013-2017 American Community Survey and Special Tabulation 5-year data.



## **SECTION 6**

### **PUBLIC HEARING #3 ZONE BASED ELECTIONS COMMUNITIES OF INTEREST AND COMPOSITION OF VOTING ZONES**

#### **SECTION 6 – MALDEF MAP**

**PURSUANT TO CALIFORNIA ELECTIONS CODE SECTION 10010(A)(1), THE  
CAMARILLO HEALTH CARE DISTRICT MUST HOLD PUBLIC HEARINGS  
AT WHICH THE PUBLIC IS INVITED TO PROVIDE INPUT REGARDING  
THE COMPOSITION OF THE VOTING ZONES.**

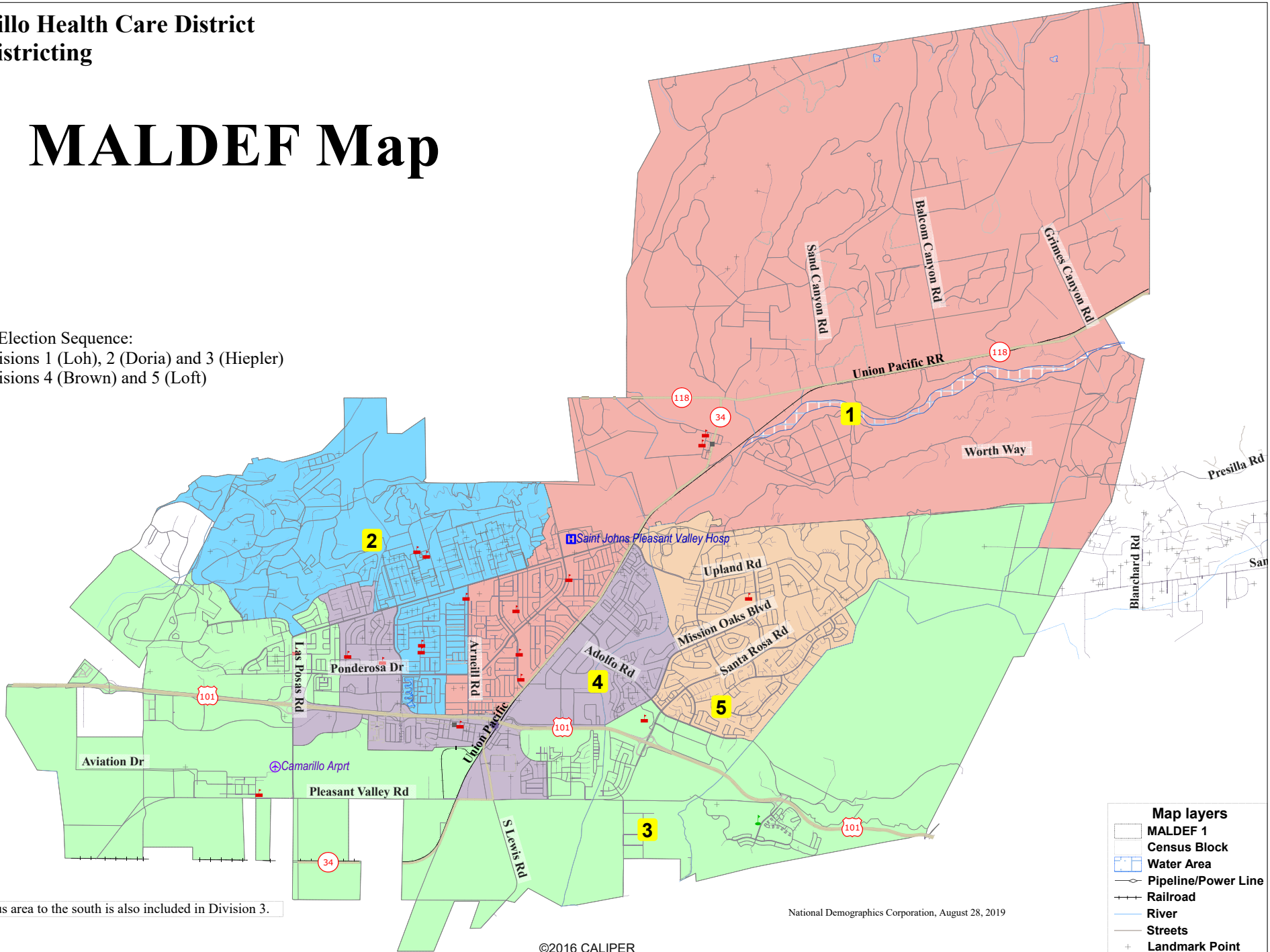
**SEPTEMBER 3, 2019**



**Camarillo Health Care District  
2019 Districting**

# MALDEF Map

Proposed Election Sequence:  
 2020: Divisions 1 (Loh), 2 (Doria) and 3 (Hiepler)  
 2022: Divisions 4 (Brown) and 5 (Loft)



Non-contiguous area to the south is also included in Division 3.

National Demographics Corporation, August 28, 2019

©2016 CALIPER

- Map layers**
- MALDEF 1
  - Census Block
  - Water Area
  - Pipeline/Power Line
  - Railroad
  - River
  - Streets
  - Landmark Point

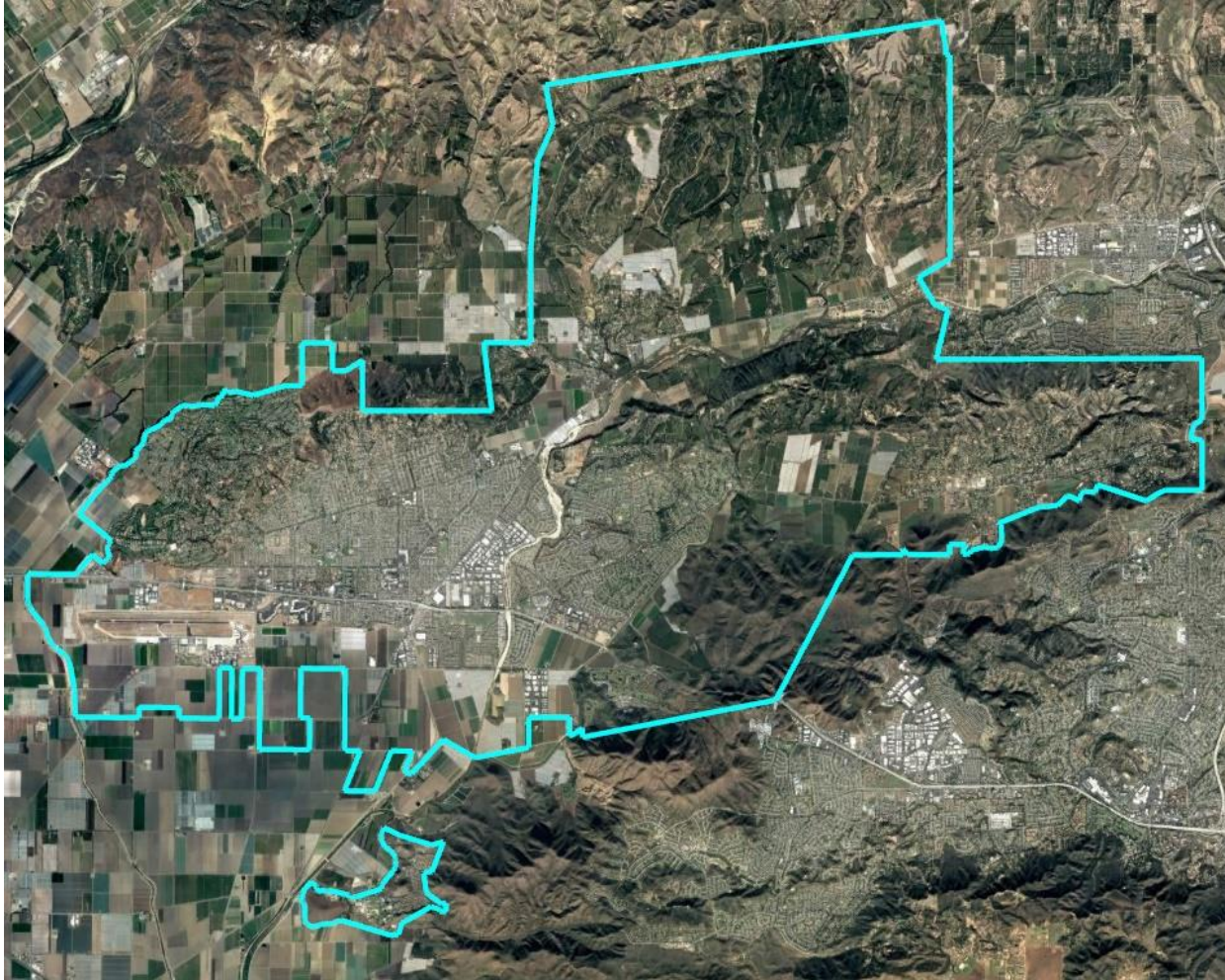
## Camarillo Health Care District - MALDEF 1 Map

District		1	2	3	4	5	Total
	Total Pop	14,901	15,507	14,688	15,244	15,261	75,601
	Deviation from ideal	-219	387	-432	124	141	819
	% Deviation	-1.45%	2.56%	-2.86%	0.82%	0.93%	5.42%
Total Pop	% Hisp	36%	18%	23%	25%	14%	23%
	% NH White	55%	71%	59%	56%	71%	63%
	% NH Black	2%	2%	3%	2%	1%	2%
	% Asian-American	6%	8%	13%	15%	12%	11%
	Total	8,900	11,484	10,791	10,041	11,931	53,147
Citizen Voting Age Pop	% Hisp	32%	14%	22%	22%	14%	20%
	% NH White	60%	74%	62%	64%	75%	67%
	% NH Black	1%	2%	4%	1%	1%	2%
	% Asian/Pac.Isl.	6%	10%	11%	11%	9%	10%
	Total	7,653	11,197	7,395	7,816	10,662	44,723
Voter Registration (Nov 2018)	% Latino est.	25%	16%	20%	23%	12%	19%
	% Spanish-Surnamed	23%	15%	18%	20%	11%	17%
	% Asian-Surnamed	3%	4%	5%	5%	5%	4%
	% Filipino-Surnamed	1%	1%	2%	2%	1%	2%
	% NH White est.	68%	77%	70%	69%	81%	74%
	% NH Black	1%	2%	3%	2%	1%	2%
	Total	5,392	8,455	5,162	5,458	8,180	32,647
Voter Turnout (Nov 2018)	% Latino est.	20%	15%	18%	20%	10%	16%
	% Spanish-Surnamed	18%	13%	16%	18%	9%	14%
	% Asian-Surnamed	3%	3%	4%	4%	4%	4%
	% Filipino-Surnamed	1%	1%	2%	2%	1%	1%
	% NH White est.	74%	79%	74%	72%	84%	77%
	% NH Black	1%	2%	3%	2%	1%	2%
	Total	7,023	9,804	6,106	7,119	9,618	39,670
Voter Turnout (Nov 2016)	% Latino est.	23%	14%	18%	20%	12%	17%
	% Spanish-Surnamed	21%	13%	17%	18%	10%	15%
	% Asian-Surnamed	3%	3%	4%	5%	4%	4%
	% Filipino-Surnamed	1%	1%	2%	2%	1%	1%
	% NH White est.	70%	79%	70%	61%	82%	73%
	% NH Black est.	1%	2%	4%	2%	1%	2%
	Total	12,792	15,993	13,692	15,537	14,655	72,669
ACS Pop. Est.	Total	12,792	15,993	13,692	15,537	14,655	72,669
Age	age0-19	25%	24%	26%	27%	20%	24%
	age20-60	53%	48%	52%	54%	45%	50%
	age60plus	23%	28%	22%	19%	35%	25%
Immigration	immigrants	19%	13%	17%	15%	12%	15%
	naturalized	51%	61%	57%	56%	76%	59%
Language spoken at home	english	66%	79%	76%	77%	85%	77%
	spanish	28%	14%	14%	11%	6%	14%
	asian-lang	4%	5%	7%	7%	6%	6%
	other lang	2%	2%	3%	5%	3%	3%
Language Fluency	Speaks Eng. "Less than Very Well"	13%	7%	7%	6%	4%	7%
Education (among those age 25+)	hs-grad	56%	49%	49%	49%	51%	51%
	bachelor	18%	26%	26%	27%	28%	25%
	graduatedegree	12%	17%	16%	17%	18%	16%
Child in Household	child-under18	29%	27%	25%	31%	20%	26%
Pct of Pop. Age 16+	employed	61%	59%	59%	65%	54%	59%
Household Income	income 0-25k	12%	9%	12%	14%	14%	12%
	income 25-50k	17%	12%	15%	13%	16%	15%
	income 50-75k	15%	16%	17%	14%	12%	15%
	income 75-200k	45%	48%	40%	45%	44%	44%
	income 200k-plus	11%	16%	16%	14%	14%	14%
Housing Stats	single family	85%	88%	73%	77%	91%	83%
	multi-family	15%	12%	27%	23%	9%	17%
	rented	34%	30%	42%	40%	22%	33%
	owned	66%	70%	58%	60%	78%	67%

Total population data from the 2010 Decennial Census.

Surname-based Voter Registration and Turnout data from the California Statewide Database.

Latino voter registration and turnout data are Spanish-surname counts adjusted using Census Population Department undercount estimates. NH White and NH Black registration and turnout counts estimated by NDC. Citizen Voting Age Pop., Age, Immigration, and other demographics from the 2013-2017 American Community Survey and Special Tabulation 5-year data.



## *Camarillo Health Care District* Districting Overview

# Districing Process

Step	Description
Two Initial Hearings	Held prior to release of draft maps. Education and to solicit input on the communities in the District. Hearings must be within 30 days of each other
Release draft maps	Maps must be posted at least 7 days prior to 3 <sup>rd</sup> hearing.
Two Hearings on Draft Maps Sept. 3 & 24	Two meetings to discuss and revise the draft maps and to discuss the election sequencing. Hearings must be within 45 days of each other
Final Hearing & Map Adoption	Map must be posted 7 days prior to adoption. Possibly also on Sept. 24
2020	First zones hold by-district elections
2021	Map adjusted using 2020 Census data
2022	Remaining zones hold first by-district elections

## Federal Laws

- Equal Population
- Federal Voting Rights Act
- No Racial Gerrymandering

## Traditional Redistricting Principles

- Communities of interest
- Compact
- Contiguous
- Visible (Natural & man-made) boundaries
- Respect voters' choices / continuity in office
- *Planned future growth*

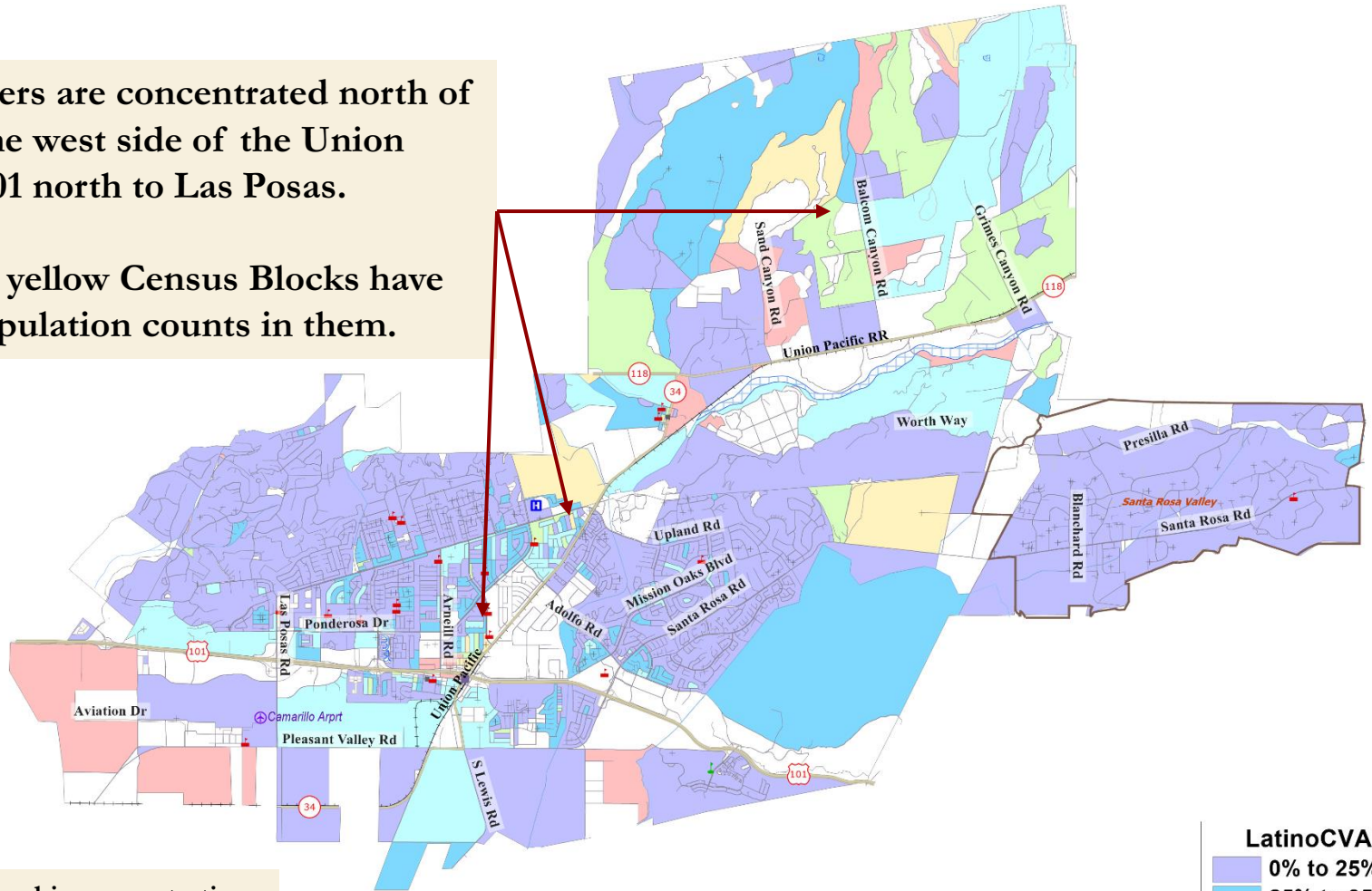


# Latino Concentrations

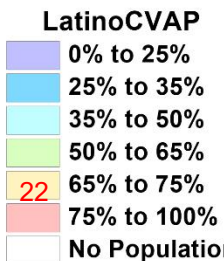
4

Latino eligible voters are concentrated north of Hwy 118 and on the west side of the Union Pacific RR from 101 north to Las Posas.

The other red and yellow Census Blocks have relatively small population counts in them.



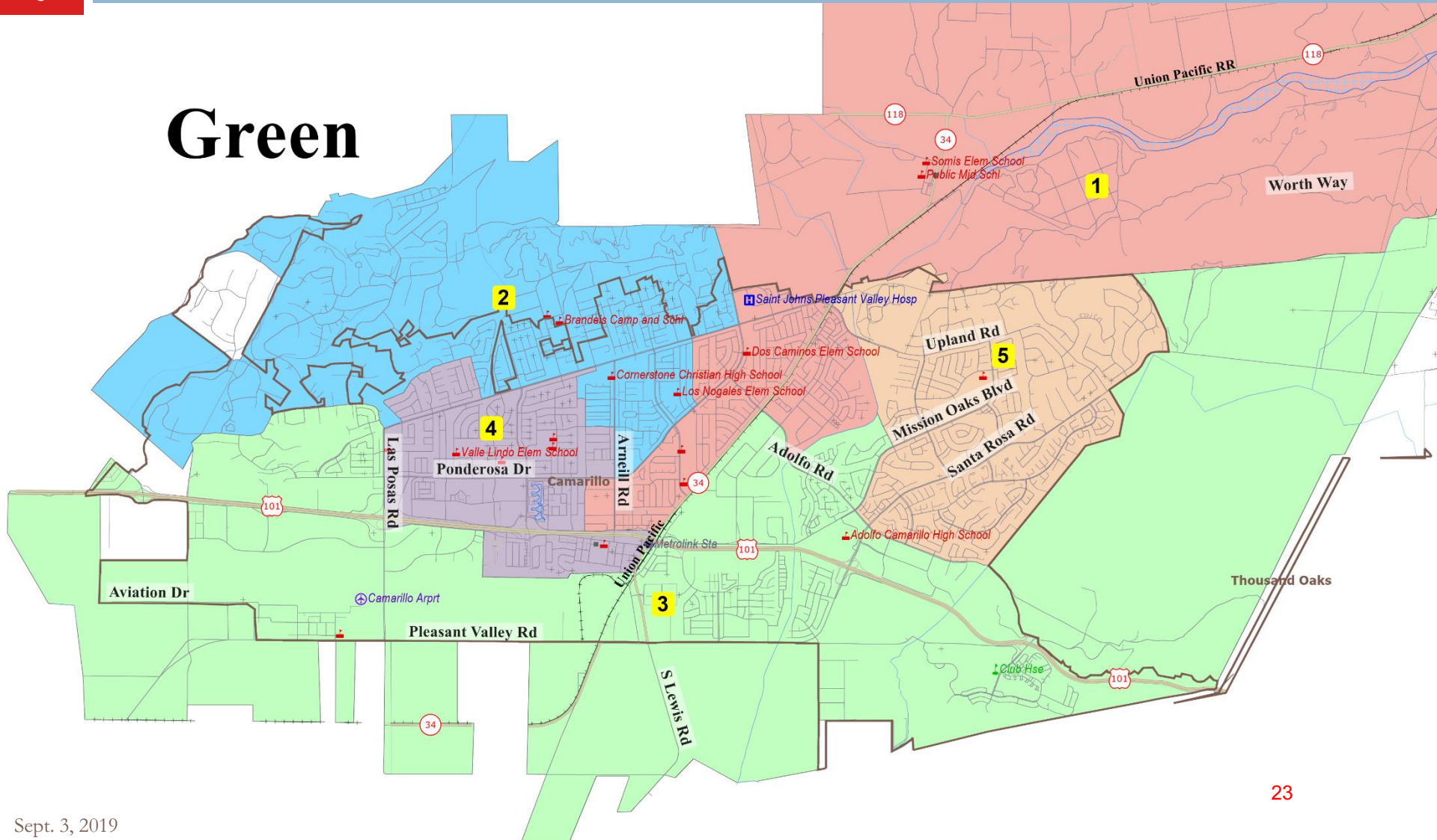
There are no large geographic concentrations of Asian-American, African-American or Native American voters.



# Draft Maps: Green

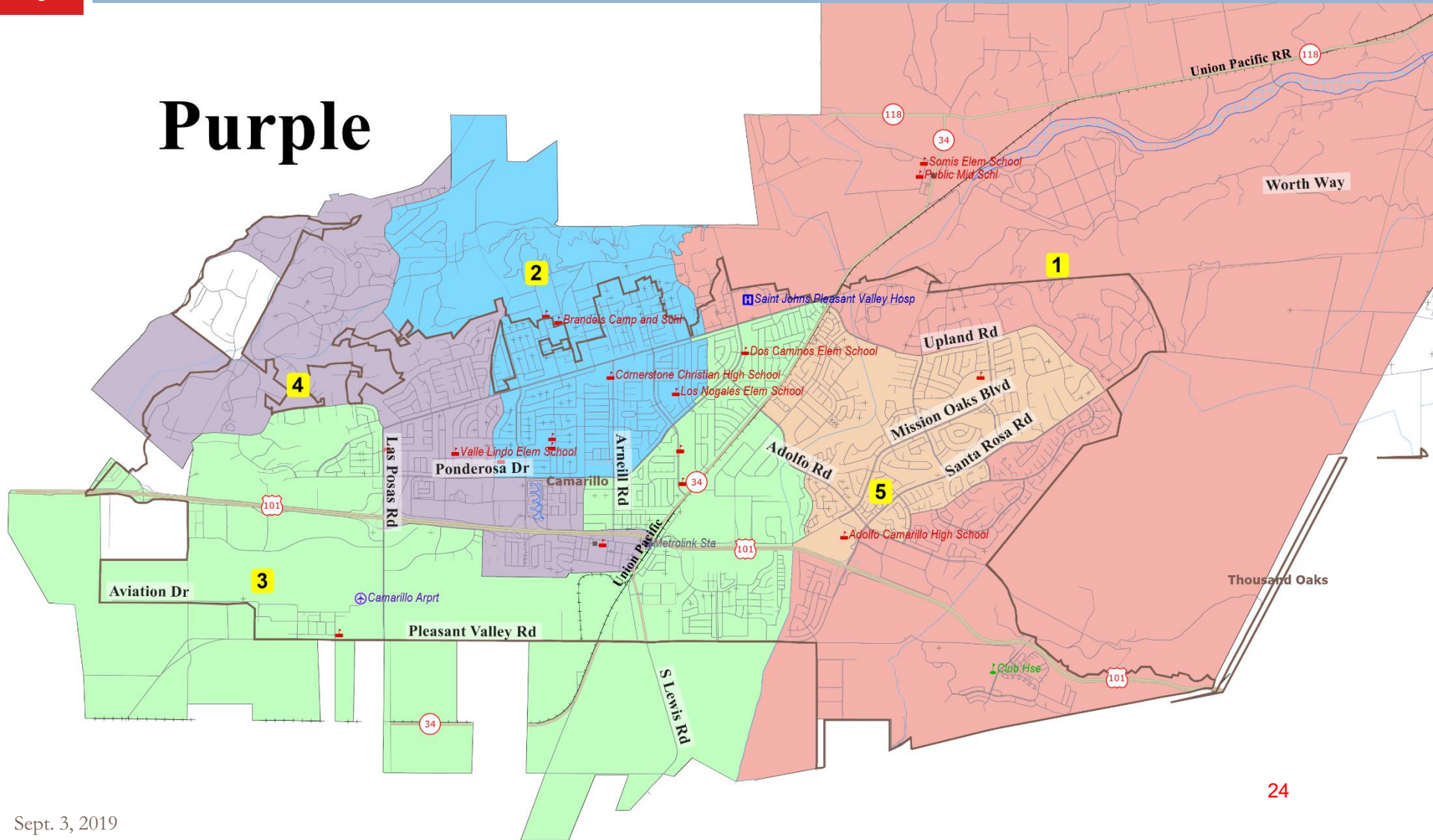
5

## Green



# Draft Maps: Purple

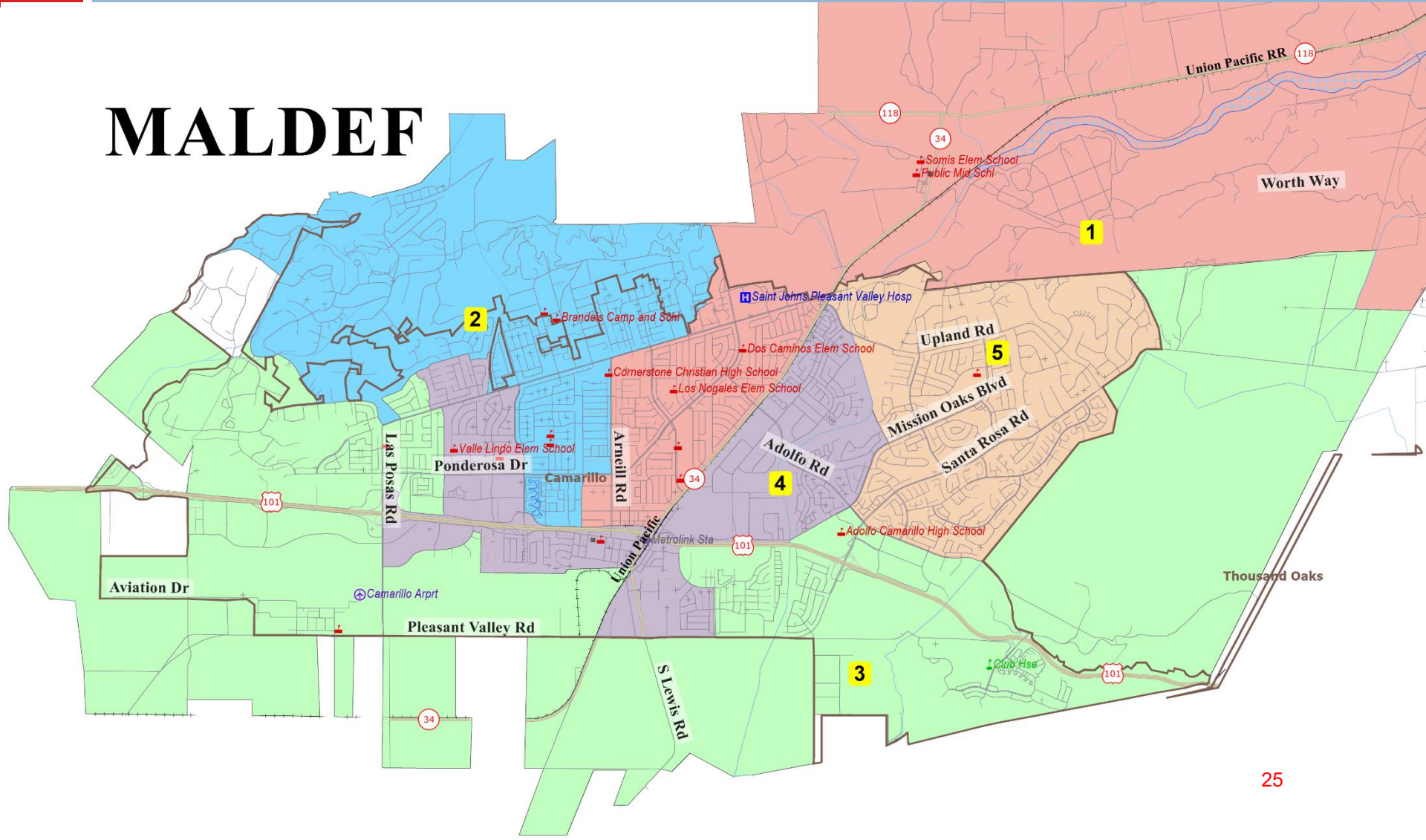
## Purple





# Draft Maps: MALDEF

## MALDEF



# Discussion

8

1. Which map(s) do you prefer?
2. Any direction on / requests for revisions to those preferred maps?
3. Any questions or direction on election sequencing?
  - ▣ All 3 maps propose zones 1, 2 and 3 up in 2020, with 4 and 5 in 2022
4. 2<sup>nd</sup> hearing and possible map selection Sept. 24

